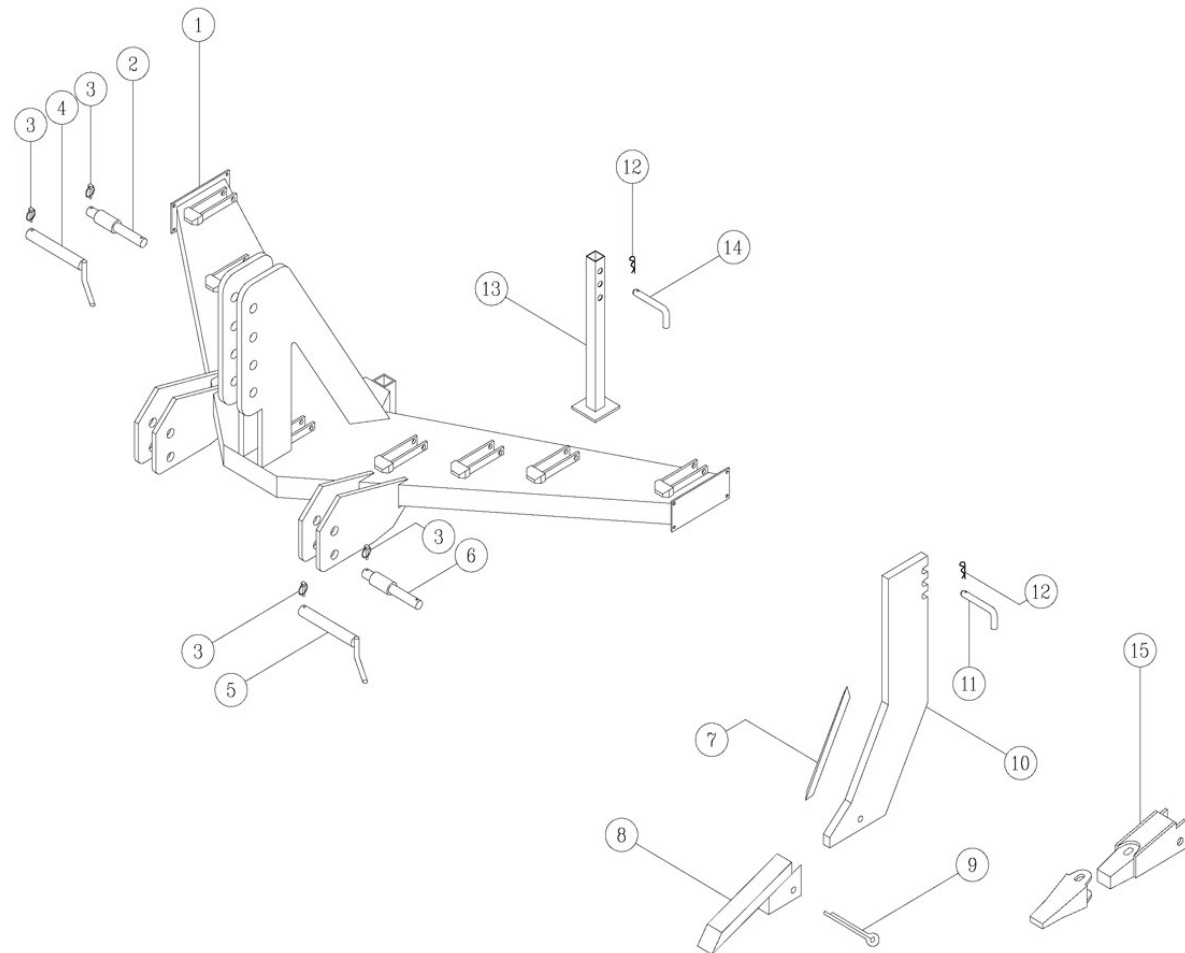
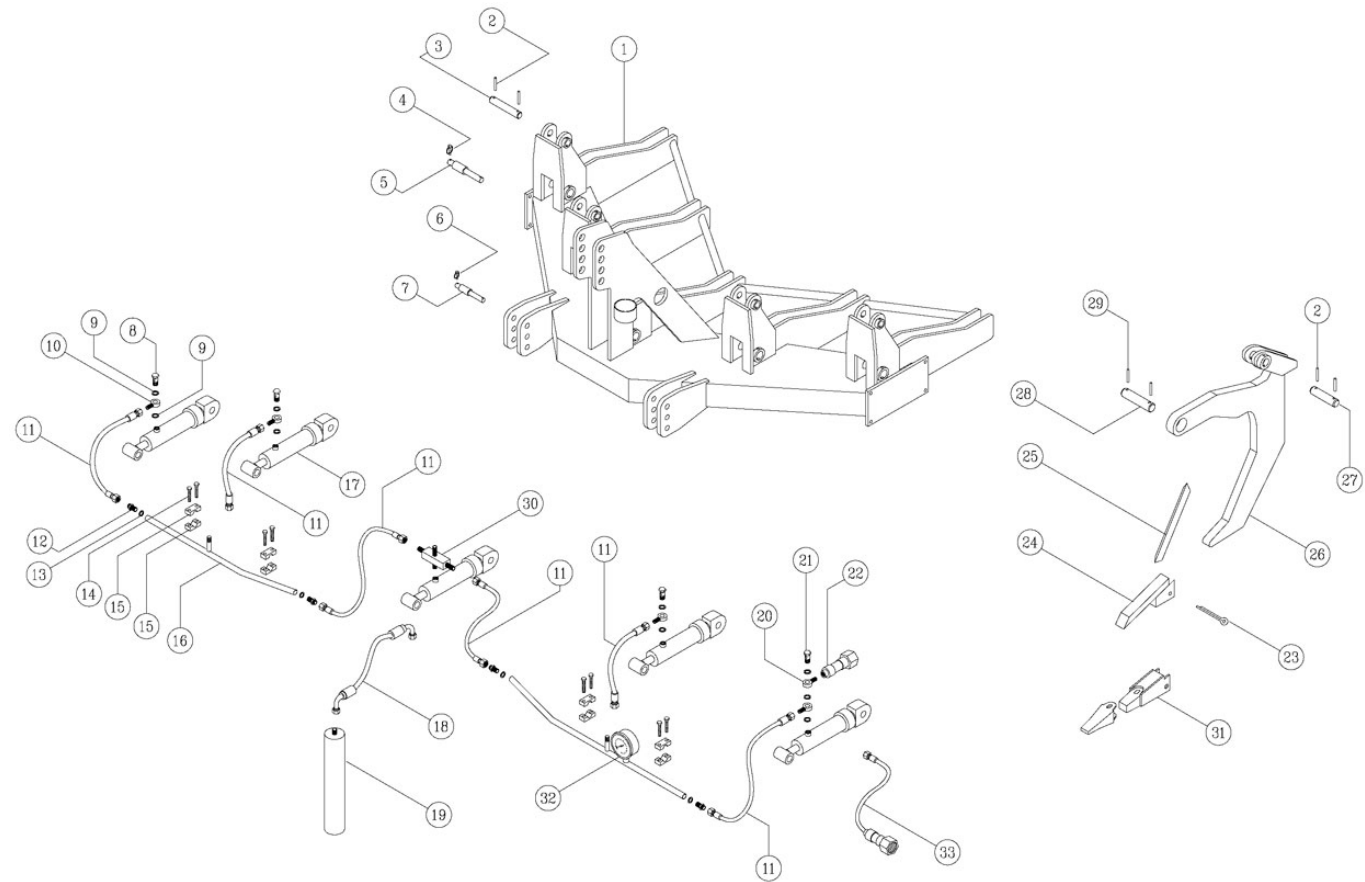


10. EXPLODED VIEWS

10.1. SIMPLE AND DOUBLE FRAME FIXED SUBSOILERS

1. Chassis
2. Tower bolt
3. Safety pin ring-8
4. Tower bolt
5. Hooking bolt
6. Hooking bolt
7. Knife
8. Point
9. Point hitch
10. Tine
11. Tine bolt
12. Safety pin R-3
13. Support foot
14. Support foot bolt
15. Reinforced point

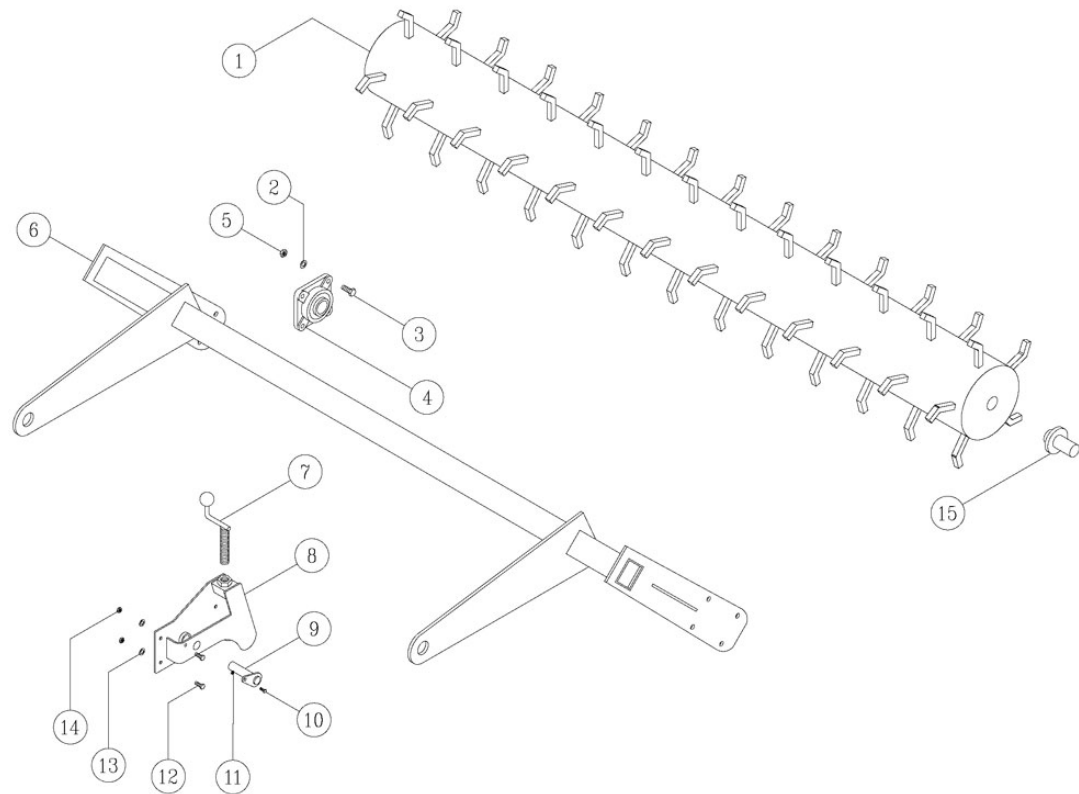


10.2. SUBSOILERS WITH HYDRAULICAL SAFETY SYSTEM

1. Chassis
2. Safety pin 8,5 mm Ø
3. Cylinder bolt
4. Safety pin ring 8 mm Ø
5. Tower bolt
6. Safety pin ring 8 mm Ø
7. Hooking bolt
8. Steerable screw 3/8"
9. Washer M/B 8"
10. Steerable 3/8"
11. Hose F 2T 5/16" L=580 mm F 3/8" F 3/8" 90°
12. Tuft 3/8" to 3/8"
13. Washer MB 3/8"
14. Screw M 6 x 40 mm
15. Clamp
16. Tube 3/8" L=800 mm
17. Cylinder 50-60-180 SE
18. Hose R 2T 5/16" L=450 mm C 3/8" C 3/8" 90°
19. Pressure accumulator
20. Steerable 3/8"
21. Steerable screw 3/8"
22. Security valve
23. Bolt 100 mm
24. Point
25. Knife
26. Tine
27. Cylinder bolt
28. Turning bolt of the tine
29. Safety pin 65 mm
30. T of 3/8"
31. Reinforced point
32. Pressure gauge
33. Loading hose + quick plug

10.3. SPIKED SIMPLE ROLLER

1. Roller
2. Washer 14 mm Ø
3. Screw M-15 x 50
4. Bearing
5. Nut M-14
6. Roller support
7. Crank
8. Support box
9. Box bolt
10. Screw M-8 x 35
11. Nut M-8
12. Screw M-16 x 40
13. Washer 16 mm Ø
14. Nut M-16
15. Semi axle



MANUFACTURER'S DATA EU DECLARATION OF CONFORMITY



To whom it may sign: **JYMPA 1971, S.L.**
Adress: **Ctra LV-3028 km 1,4. 25334 Castellserà (Lleida, Spain)**
Tel: **34 973 61 01 25**
FAX: **34 973 61 04 56**
Web: **<http://www.jympa.com>**

Declares under its own responsibility that the subsoiler

Brand: **JYMPA**
Product name:
Serial number:
Year of production:

It is in accordance with all applicable provisions of the Machinery Directive 2006/42/CE (DOUE L157 09.06.2006)

Harmonized technical rules:

- UNE-EN ISO 12100-1
- UNE-EN 842
- UNE-EN ISO 14121-1
- UNE-EN ISO 13857
- UNE 68012
- UNE-EN ISO 12100-2
- UNE-EN 641-1
- UNE-EN 349
- UNE-EN ISO 4254-1
- UNE 68027

Identification of the person empowered to draw up the declaration on behalf of the manufacturer:

Name:
Position:
Place and date of issue:

Signature and stamp

This statement does not imply any warranty. It is necessary to respect the safety instructions contained in the documentation supplied. This declaration becomes void if unauthorized modifications to the machine.

WARRANTY

Guarantee for manufacturing defects to the down referred subsoiler for a period of 12 months in accordance with the following provisions:

1. The warranty is only valid if the purchaser signs both copies of the warranty.
2. The guarantee requires the use of the machine according the Use and Maintenance Manual.
3. Non-original parts won't be used on the machine.
4. The overhaul of the subsoiler will be held in the workshops themselves or in the authorized ones by JYMPA 1971, S.L.
5. The warranty covers the replacement of worn or broken parts due to manufacturing defects and workmanship, but not travel or freight if any.
6. The parts that are subject to wear operation considered normal by the manufacturer are not subject to this guarantee.
7. If the machine needs to be transported to a workshop for repair, the transportation costs will borne by the customer.
8. It is required the presentation of this warranty so the repair be covered by it.

Mr. / Mrs..... with ID card
located at

As a customer of the machine:

Brand: JYMPA

Type:

Model:

Serial number:

I declare to be fully aware of the terms of the guarantee, which I accept and recognise that my rights to this warranty will be void in case of not respecting the clauses or not following the instructions in the manual and maintenance delivered by JYMPA 1971 SL.

Date:

Stamp of the company	Signature of the client
----------------------	-------------------------

Copy for the customer

WARRANTY

Guarantee for manufacturing defects to the down referred subsoiler for a period of 12 months in accordance with the following provisions:

1. The warranty is only valid if the purchaser signs both copies of the warranty.
2. The guarantee requires the use of the machine according the Use and Maintenance Manual.
3. Non-original parts won't be used on the machine.
4. The overhaul of the subsoiler will be held in the workshops themselves or in the authorized ones by JYMPA 1971, S.L.
5. The warranty covers the replacement of worn or broken parts due to manufacturing defects and workmanship, but not travel or freight if any.
6. The parts that are subject to wear operation considered normal by the manufacturer are not subject to this guarantee.
7. If the machine needs to be transported to a workshop for repair, the transportation costs will borne by the customer.
8. It is required the presentation of this warranty so the repair be covered by it.

Mr. / Mrs..... with ID card
located at

As a customer of the machine:

Brand: JYMPA

Type:

Model:

Serial number:

I declare to be fully aware of the terms of the guarantee, which I accept and recognise that my rights to this warranty will be void in case of not respecting the clauses or not following the instructions in the manual and maintenance delivered by JYMPA 1971 SL.

Date:

Stamp of the company	Signature of the client

Copy to be sent to JYMPA 1971 SL